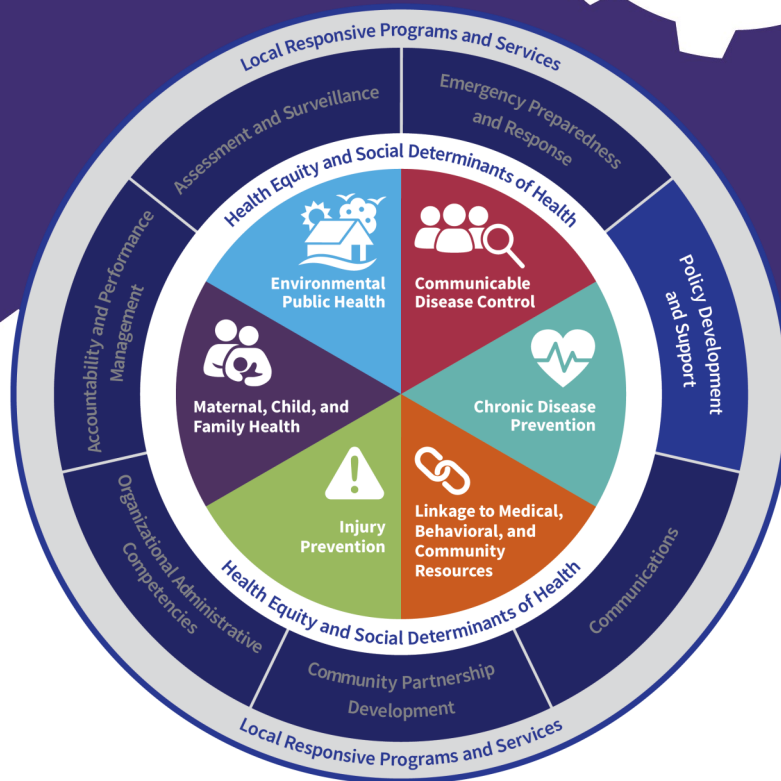


FOUNDATIONAL CAPABILITY: Policy Development and Support

SPECS

Policies are essential to improve the physical, environmental, social and economic conditions that affect health. Policy Development and Support indicate that every public health agency should have the ability to serve as an expert resource for establishing, maintaining and developing basic public health policy recommendations that are evidence-based, grounded in law and legally defensible.

Public health agencies should be able to effectively inform and influence policies being considered by other organizations in their jurisdiction.



Foundational Capabilities Foundational Areas

DISCUSSION

1. Why do we need [health-informed policies](#)?
2. What public health policies would improve health in our community?
3. What is our capacity to research, analyze, and cost out the impact of public health policy?
4. How are we integrating equity into our policy recommendations?

APPLICATION

1. Read [Understanding Evidence-Based Public Health Policy](#).
2. Learn to communicate with community partners the need for [health in all policies](#).
3. Identify [resources](#) that can be shared with legislators to engage their support for public health policies.

#HealthierMO is a grassroots initiative to transform Missouri's public health system into a stronger, more sustainable, culturally relevant and responsive system that can offer every Missourian the fair opportunity for health. #HealthierMO is a project of the [Missouri Public Health Association](#), with support from [Missouri State University](#). Funding is provided by [Missouri Foundation for Health](#) and [Health Forward Foundation](#).

RESOURCES

- [Getting Started with Policy Change, County Health Rankings & Roadmaps](#)
- [Promoting Mask-wearing During the COVID-19 Pandemic: A Policymaker's Guide, Resolve](#)
- [Public Health and Prevention, Alliance for Health Policy](#)
- [Healing the Nation: Advancing Mental Health & Addiction Policy, Well Being Trust](#)
- [Influencing Policy Development, Community Toolbox](#)