

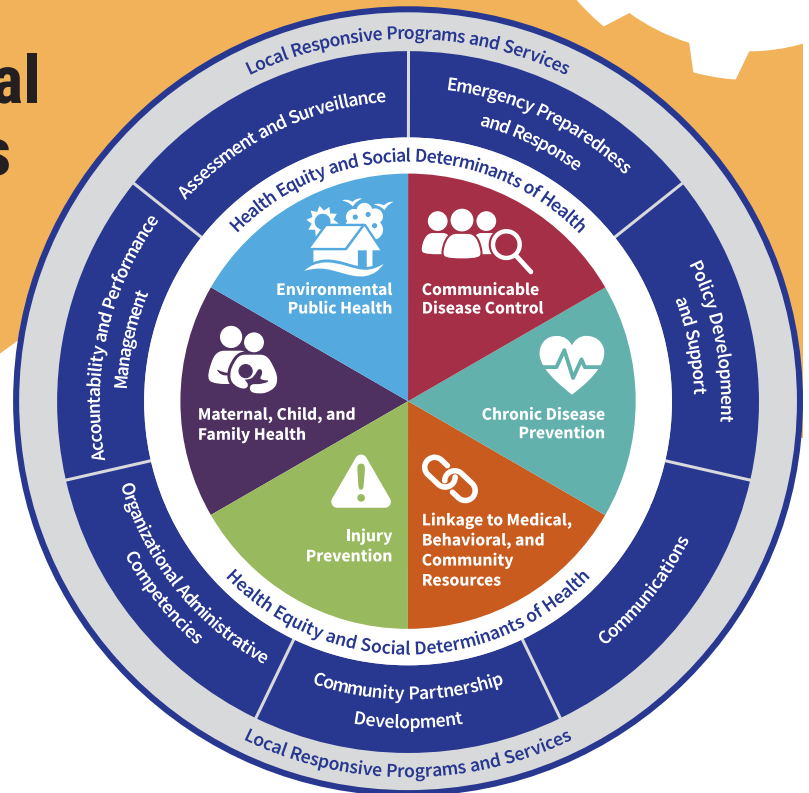
Missouri's Foundational Public Health Services MODEL

SPECS

Missouri has developed a **Foundational Public Health Services (FPHS) model** that defines a minimum set of fundamental public health services and capabilities that must be available in every community in order to have a functional public health system.

The model builds on the 10 Essential Services and Core Public Health Functions to create a simplified operational framework upon which LPHAs can explain the vital role of governmental public health in a thriving community, identify capacity gaps, determine the cost for assuring foundational public health capabilities and areas, and justify future funding requests.

The model defines seven cross-cutting skills required to assure the delivery of foundational public health services and achieve equitable health outcomes (blue ring) and six interconnected areas of public health expertise best provided by governmental public health agencies (pie pieces). Health Equity and Social Determinants of Health are included as a lens through which all public health programs and services should be provided. The model also includes room for Local Responsive Programs and Services that may not be foundational statewide, but are vital to meet identified needs in specific communities.



Foundational Capabilities



Foundational Areas

Copyright © 2019 Missouri Public Health Association (MPHA), 722 E Capitol Avenue, Jefferson City, Missouri. Adapted from the Public Health National Center for Innovations' (PHNCI) national FPHS model. Developed by public health professionals in Missouri and adopted for statewide use by the #HealthierMO Initiative's Executive Committee, December 2019.

DISCUSSION

1. How well do our current programs align with the FPHS model?
1. What are our capacity gaps in comparison to the FPHS model?
3. How can we attach to the FPHS model the cost for assuring these foundational capabilities and areas of expertise?
4. How can the FPHS model be implemented into our daily operations?

APPLICATION

1. Ask employees to highlight areas of the model that apply to their work.
2. Ask your agency leadership to formally adopt the FPHS Model with a resolution, policy or statement.

RESOURCES

- FPHS Overview video, PHNCI
- National FPHS Model Fact Sheet, PHNCI
- FPHS Planning Guide, PHNCI

#HealthierMO is a grassroots initiative to transform Missouri's public health system into a stronger, more sustainable, culturally relevant and responsive system that can offer every Missourian the fair opportunity for health. #HealthierMO is a project of the [Missouri Public Health Association](#), with support from [Missouri State University](#). Funding is provided by [Missouri Foundation for Health](#) and [Health Forward Foundation](#).