



Missouri's

Foundational Public Health Services Model

Health isn't just about the absence of illness. It's about living our healthiest lives – physically, mentally, spiritually, and emotionally. It is the mission of public health to make sure we all have what we need to reach our full potential and help our communities thrive.

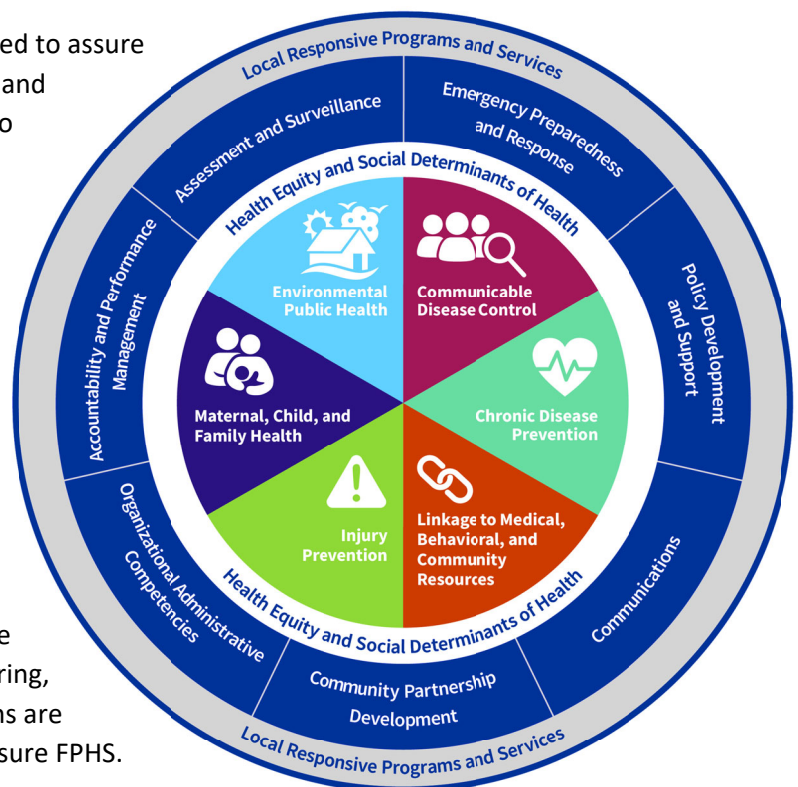
Public health experts are trained to diagnose the health of a community by listening to the people who live there and by analyzing data to identify patterns and problems. Instead of waiting to treat people who are sick, public health brings together everyone who has a role in community wellness to develop strategies, policies, and programs that will prevent injuries and disease. This early investment in building a strong foundation for community health saves our communities money and ensures we all have the opportunity to thrive.

Like a building relies on a strong foundation, we depend on foundational public health services to assure safe food and water, prevent injuries, stop the spread of disease, improve health for our families, and connect us to local resources. This public health framework, together with quality education, safe and affordable housing, accessible healthcare, and employment opportunities, creates a healthier environment for all of us.

Missouri's **Foundational Public Health Services (FPHS) model** defines a minimum set of fundamental public health services and capabilities that must be available in every community. The model builds on the 10 Essential Services and Core Public Health Functions to achieve a simplified operational framework upon which public health agencies can explain the vital role of governmental public health in a thriving community, identify capacity gaps, determine the cost for assuring foundational public health capabilities and areas, and justify funding requests.

The model defines seven cross-cutting skills required to assure the delivery of foundational public health services and achieve equitable health outcomes. The model also identifies six interconnected areas of public health expertise best provided by governmental public health agencies.

Rather than focusing on individual programs defined by limited funding streams, Missouri's FPHS model describes a minimum set of measurable capabilities under each area that are truly essential in every Missouri community. These capabilities will be further defined in a capacity assessment and then attached to a measurable cost for delivery. Each public health agency determines the best strategy to achieve the capabilities in their own jurisdiction. Resource sharing, collaborative partnerships, and innovative solutions are just some of the strategies at use in Missouri to assure FPHS.



Foundational Capabilities



Foundational Areas

Foundational Capabilities and Areas of Expertise

Foundational Capabilities

Assessment and Surveillance	Capacity to collect, analyze, and utilize data to identify and address health priorities
Emergency Preparedness and Response	Capacity to promote ongoing community resilience and preparedness, issue and enforce public health orders, share information with key partners and the general public, and lead the health and medical response to emergencies
Policy Development and Support	Capacity to serve as an expert for influencing and developing policies that support community health and are evidence-based, grounded in law, and legally defensible
Communications	Capacity to build trust and engage internal and external audiences with clear, transparent, and timely sharing, receiving, and interpretation of information
Community Partnership Development	Capacity to create, convene, and sustain strategic collaborative relationships with partners at the local, regional, and state level
Organizational Administrative Competencies	Capacity to demonstrate competence in cross-cutting skills required for governmental public health leadership
Accountability and Performance Management	Capacity to follow accepted business standards, integrate evidence-based practices, and maintain an organizational culture of continuous quality improvement

Foundational Areas of Expertise

Communicable Disease Prevention	Capacity to prevent and stop the spread of disease through strategies such as surveillance, investigation, education, and interventions
Chronic Disease Prevention	Capacity to work with community partners to share information, develop policies, and create environments that prevent chronic disease and support chronic disease management
Environmental Public Health	Capacity to reduce harmful exposures and foster safe and healthy environments that protect communities
Maternal, Child, and Family Health	Capacity to address conditions that affect health behaviors among women, support family health, and ensure children the healthiest start in life
Injury Prevention	Capacity to analyze trends, research causes, develop strategies, and create policies in order to reduce preventable injuries
Linkage to Medical, Behavioral, and Community Resources	Capacity to develop a strong network of partners with diverse expertise and resources to build a strong foundation for community health

In addition, Missouri's FPHS model highlights Health Equity and Social Determinants of Health as a lens through which all public health programs and services should be provided. It also includes Local Responsive Programs and Services that may not be foundational statewide, but are vital to meet identified needs in specific communities.

Public health agencies depend on a network of partners to assure communities have equitable access to the expertise and resources necessary to address many of the underlying causes of poor health – like transportation, housing, access to healthy food, health literacy, and health insurance. Missouri's public health agencies have a rich history of creatively solving the challenge of increasing demand for services with shrinking resources. The FPHS model offers a framework upon which to lead communities through strategic planning and implementation of solutions that assure a stronger public health system and offer every Missourian the opportunity to reach their full potential and live their healthiest life.

